



Hydrock

OCCUPIER TRAVEL PACK



HINCKLEY PARK

J 1 • M 6 9



CONTENTS

Introduction	3
About This Travel Information Pack	3
Walking	4
Cycling	5
Public Transport – Bus	6
Public Transport –Trains	7
Car Sharing	8
Electric Vehicles	8
Transport and Mobility	9
Taxi/Uber	9
Journey Planning	10
Amenities and Information	10

Choose how
you move



This Travel Pack has been provided for you to browse through and find out about your local travel options. It aims to provide you with information on local facilities and transport services available, including details of how you can access them conveniently.

WHAT IS A TRAVEL PLAN?

The purpose of a Travel Plan is to demonstrate a commitment to minimising the impact of travel on the environment by reducing the level of unnecessary travel and encouraging those who have to travel to do so in a more environmentally friendly way. The overarching aim of the Travel Plan is to promote greener, cleaner travel choices, reducing reliance on the private car. The Travel Plan is primarily aimed at the journey to and from work or journeys made during the course of the working day. It also considers travel issues relating to visitors.

A Travel plan can bring a range of benefits, not only to the community but to staff and the business implementing the plan. Benefits include a healthier, more productive workforce, cost savings to staff, reduced demand for on-site parking and less congestion locally.

A travel plan is a “live” on-going document, and as such are continually reviewed and updated. All occupying companies of Hinckley Park will be encouraged to adhere to the principles of sustainable transport set out in the Travel Plan and issue this Travel Pack to all employees via the dedicated Travel Plan Coordinator

The principal objectives of the Travel Plan are:

- **Objective 1** – to develop a safe, convenient, efficient and attractive transport infrastructure which encourages and facilitates the use of walking, cycling and public transport and which minimises reliance on and discourages unnecessary use of private cars.
- **Objective 2** - to increase the role of walking and cycling as transport modes, in support of wider transport, health and social policy objectives.
- **Objective 3** - to actively promote car sharing between all new employees at the proposed development by creating a database of employee travel patterns prior to occupation.



PARK WIDE TRAVEL PLAN COORDINATOR

We hope this guide will be useful to you- please keep it for reference. If you would like any further information on planning your journey, please email or call the Travel Plan Coordinator using the details below.

Syed Rahi
Email: hinckleyparkTPC@hydrock.com
Telephone: 0161 8045550

Walking is a great way to improve your health and fitness. It has been shown to reduce stress, increase productivity and energy levels and improve sleep. And walking is free, reliable and a simple way to introduce daily exercise into your life – no matter your age or fitness!

Leicestershire County Council offer a range of walking maps across Leicestershire with interactive maps for over 150 walks, guided trails and walking groups.

These routes connect via public rights of way and existing pavements which provide access to bus stops, shops and leisure areas. The town of Hinckley has a full range of services facilities and amenities within the town centre including a number of high street shops, restaurants/coffee shops, supermarkets, library, opticians, pharmacies, banks, barbers/hairdressers, dental surgeries and more.

Shared footpaths for pedestrians and cyclists are provided on the A5, Stretton Baskerville, B4109 Rugby Road, and on the A5 Watling Street. A dedicated footpath/cycleway into Hinckley Park is provided from the A5. Likewise, there are several public footpaths within the vicinity of Hinckley Park!

Check out the Hinckley Park Walking Catchment contained in this Travel Pack!



Choose How You Move!



The Choose How You Move website is a dedicated Journey Planner across Leicester and Leicestershire and included information on the following:

- Walking - Routes, Maps, PROW routes and Guided Walks;
- Cycling - Maps, Routes, Cycle Shops and Guided Rides;
- Public Transport - Timetables, Bus Tickets, Bus Routes, Train Timetables;
- Park and Ride Facilities;
- Car Sharing facilities, Parking and information on Electric Vehicles;
- Upcoming events across Leicester and Leicestershire.

Check out the health benefits of walking and information on walks and trails within Leicestershire on the 'Choose how you Move' Website which offers a smarter way to travel in Leicestershire

www.choosehowyoumove.co.uk

Useful Apps

Strava (Android and iOS)

Pedometer (Android and iOS)

iFootpath (Android and iOS)

MapMyWalk (Android and iOS)

Walking Route Map – Hinckley Park



U57 Public Footpath:
From Southfield Road, Hinckley to Aster
Close, Burbage and from Sketchley Road to
Bulfurlong Lane

U65 Public Footpath: From
Britannia Road, to join footpath
U66 north of Burbage Fields

M69

Hinckley Park

Shared footpath for
pedestrians and
cyclists

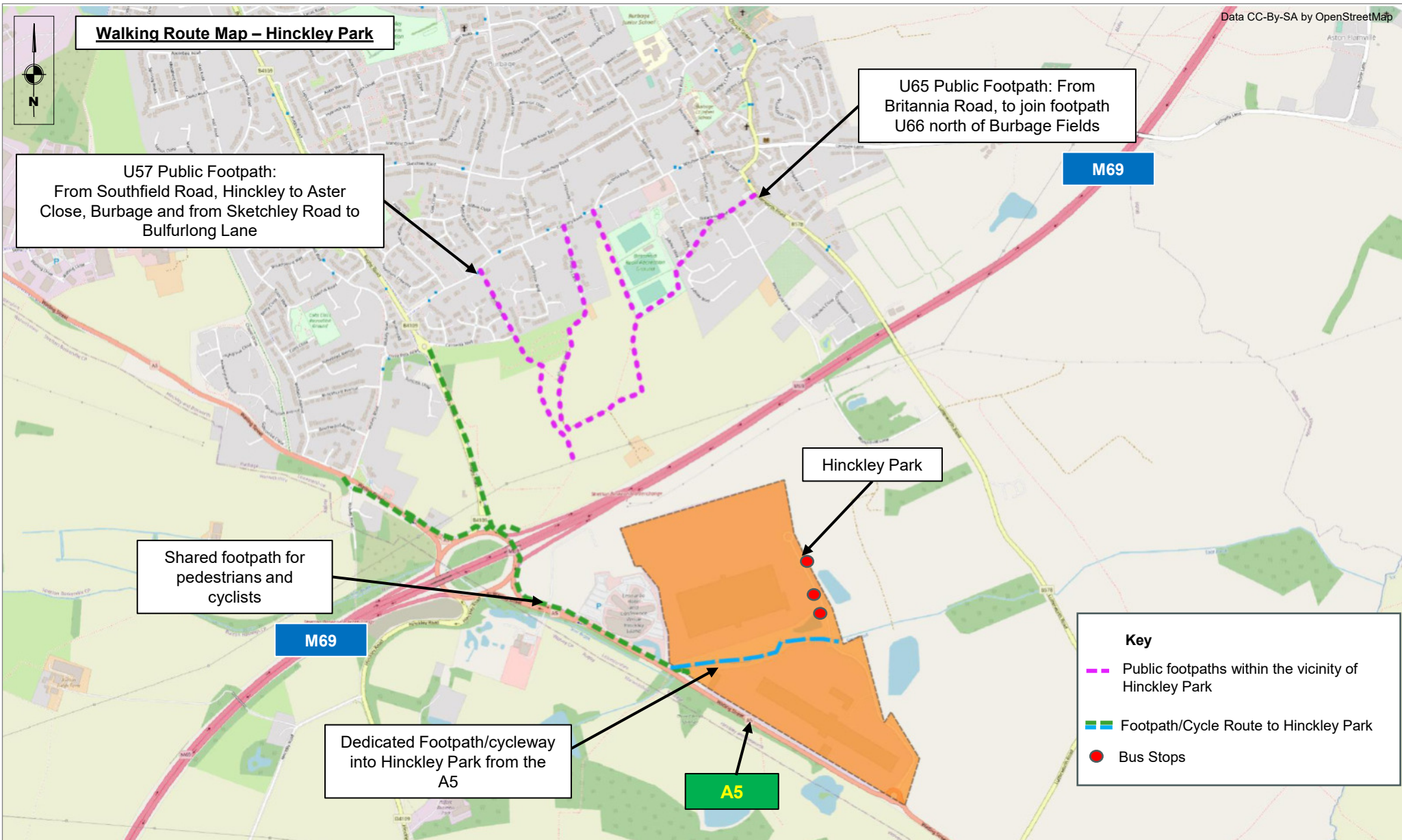
M69

Dedicated Footpath/cycleway
into Hinckley Park from the
A5

A5

Key

- Public footpaths within the vicinity of
Hinckley Park
- Footpath/Cycle Route to Hinckley Park
- Bus Stops



CYCLING

Cycling is a fast, cheap way of getting around. It is one of the easiest ways to keep fit without the expense of a gym membership. Regular cycling lowers the risk of heart disease, diabetes and helps to lose weight.

National Cycle Route 52 is situated to the north west of Hinckley which runs north from Warwick through Coventry, Nuneaton and Coalville to link with National Route 6 just west of Loughborough.

As mentioned previously, there are shared footpaths for cyclists along the A5, Stretton Baskerville, B4109 Rugby Road, and on the A5 Watling Street. There is a footpath/cycleway that provides access into Hinckley Park from the A5.

You've heard of Park and Ride, but have you ever thought about Bike and Ride?

For commuting trips, even if you can't cycle the whole way to work, perhaps you could consider cycling some of the way and using public transport for the remaining journey. Leicestershire County Council offer the 'Choose How you Move' website which includes a dedicated journey planner planner!

Check out the 5km Cycling Catchment contained in this Travel Pack!

Cycle with confidence - get free cycle training and confidence sessions for children and adults in the Leicestershire area.

www.choosehowyoumove.co.uk/cycling/

For travelling to work, ask your employer about the Cycle to Work Scheme - you might be entitled to a tax-free bike and accessories!

www.cyclescheme.co.uk

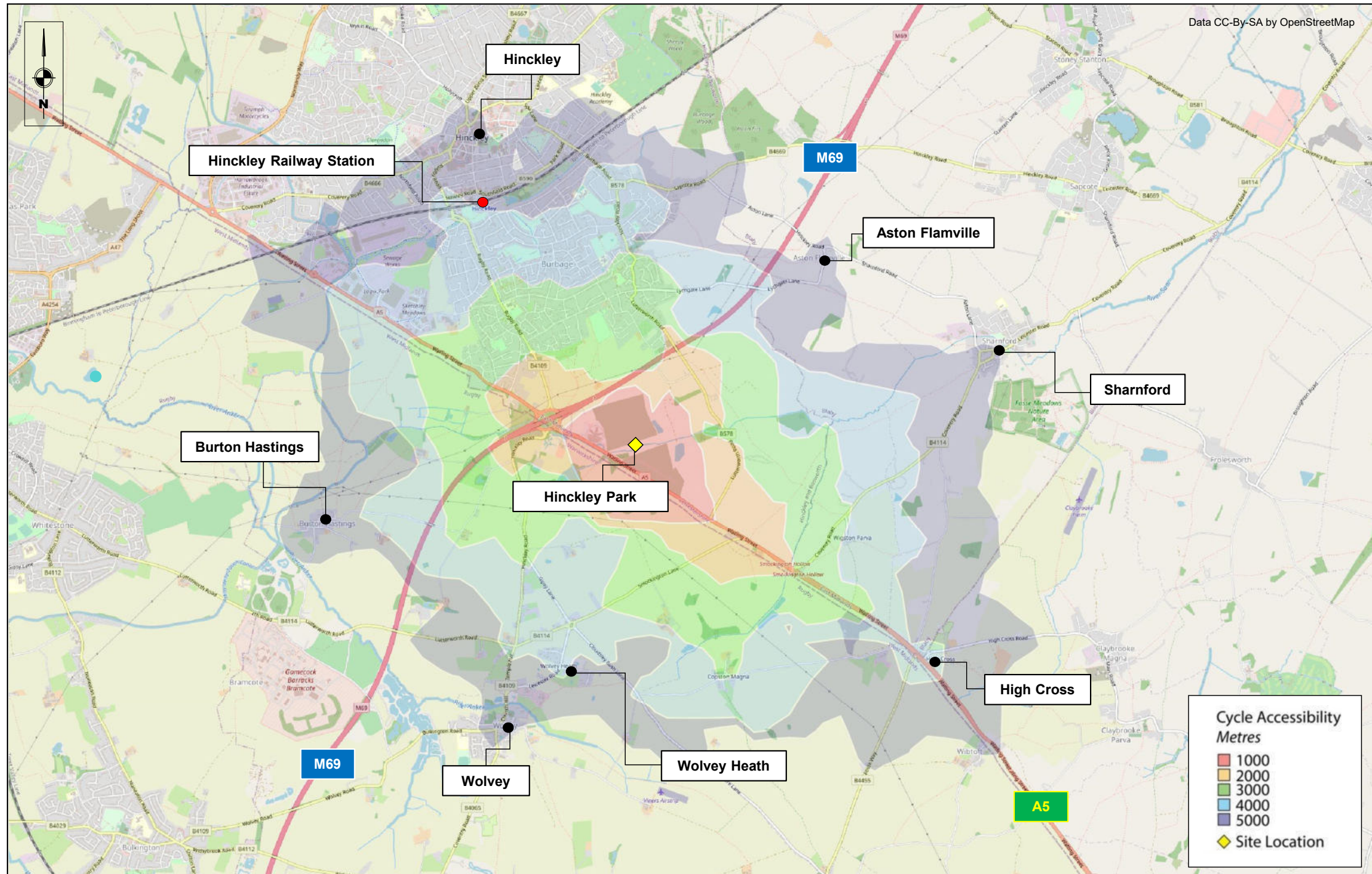
Useful Apps

National Cycle Network (Android and iOS)

MapMyRide (Android and iOS)

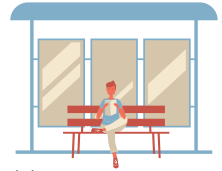
Strava (Android and iOS)

Cycle Meter (iOS Only)





Arriva Bus Service 8 Lutterworth to Hinckley Service



Hinckley Park benefits from Bus Service No.8 (Hinckley to Lutterworth) which is operated by Arriva. There are three bus stops with bus shelters located along the access road of the site.

Hinckley to Lutterworth via Hinckley Park:

From Hinckley Park, Bus No.8 offers 16 services, 14 during Saturdays, and 3 on Sundays including early morning and evening buses. First and last bus on weekdays is 05:17 and 21:28. First and last bus on Saturdays is 05:27 and 21:27. First and last bus on Sundays is 05:22 and 21:22.

Lutterworth to Hinckley via Hinckley Park:

From Hinckley Park, Bus No.8 offers 16 services during the weekdays, 15 during Saturdays, and 3 on Sundays including early morning and evening buses. First and last bus on weekdays is 05:10 and 22:35. First and last bus on Saturdays is 05:10 and 21:36. First and last bus on Sundays is 06:36 and 22:36.

IM Properties are committed to helping Hinckley Park based employees with their daily commute to work through a free bus pass scheme. A 6-month bus pass will be given to employees who meet the eligibility criteria. To apply for a free bus pass, the employee must submit an application form to the Site-wide Travel Plan Coordinator at hinckleyparkTPC@hydrock.com.

The bus pass application form is available on the Hinckley Park website <https://hinckleypark.co.uk/>

A range of daily, weekly, and longer period season tickets are available. You can also buy a carnet-style 'Ten Trip' ticket, ideal for those working shifts or only travelling on certain days!



Useful Information

www.arrivabus.co.uk/midlands
www.choosehowyoumove.co.uk/public-transport



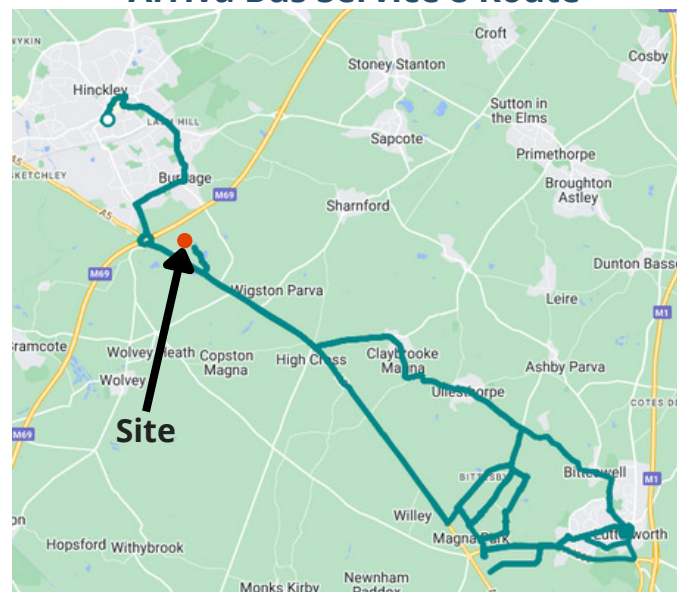
Save Money with a PLUSBUS Ticket

PLUSBUS is a cheap bus pass that you buy online with your train ticket or at any station ticket office, giving you unlimited bus and tram travel (on participating operators' services) to and from the rail station and around the whole urban area of the rail-served town.

**Buy one for the start of your journey
and/or for the end of it.**

**Check out the
Bus Timetable +
Service 8 route
map on the
following page
below!**

Arriva Bus Service 8 Route



via Burbage, Hinckley Park, Ullesthorpe and Magna Park - Valid from Sunday, January 7, 2024 to Tuesday, April 9, 2024

	8	8	8	8	8	8	8	8	8	8	8 ¹	8 ²	8	8	8	8	8
Lutterworth George Street Car Park	--	0600	0700	0800	0900	1000	1100	1200	1300	1400	1515	1500	1600	--	1715	1900	2205
Lutterworth College	--	--	0705	--	--	--	--	--	--	--	--	1520	--	--	--	--	--
Magna Park George Building	--	0611	--	0806	0906	1006	1106	1206	1306	1406	--	1506	1611	--	1726	1911	2216
Magna Park Disney	--	0616	--	0810	0910	1010	1110	1210	1310	1410	--	1510	1615	--	1730	1915	2220
Magna Park Eddie Stobart Logistics	--	0620	--	0815	0915	1015	1115	1215	1315	1415	--	1515	1620	--	1735	1920	2225
Uilesthorpe South Avenue	--	--	0713	0821	0921	1021	1121	1221	1321	1421	1528	1521	1626	--	1741	--	--
Claybrooke Magna Bell Street	--	--	0717	0825	0925	1025	1125	1225	1325	1425	1532	1525	1630	--	1745	--	--
Magna Park Stop J	--	0606	--	--	--	--	--	--	--	--	--	--	1606	--	1721	1906	2211
Burbage Hinckley Park	0510	0631	0728	0836	0936	1036	1136	1236	1336	1436	--	1536	1640	1730	1755	1930	2235
Burbage Horsepool	0518	0639	0738	0845	0945	1045	1145	1245	1345	1445	1545	1545	1650	1739	1805	1938	2243
Hinckley The Crescent Bus Station	0535	0650	0750	0855	0955	1055	1155	1255	1355	1455	1600	1555	1705	1755	1820	1950	2255

Monday to Friday - Lutterworth George Street Car Park

	8	8	8	8 ¹	8 ²	8	8	8 ¹	8 ¹	8 ²	8	8	8	8	8
Hinckley The Crescent Bus Station	0500	0600	0700	0735	0800	0900	00	1300	1400	1400	1500	1615	1710	1800	2110
Burbage Aston Lane	0508	0608	0709	0744	0810	0910	10	1310	1410	1410	1510	1625	1720	1810	2118
Burbage Hinckley Park	0517	0617	0719	0754	--	0920	20	1320	1420	1420	1520	1635	1730	1820	2128
Claybrooke Magna Bell Street	--	--	0726	0801	0824	0927	27	1327	1427	1427	1527	1642	--	--	--
Uilesthorpe South Avenue	--	--	0730	0806	0828	0931	31	1331	1431	1431	1531	1646	--	--	--
Lutterworth New Street	--	--	--	0816	--	--	--	--	--	--	--	--	--	--	--
Lutterworth Morrisons	--	--	--	0821	--	--	--	--	--	--	--	--	--	--	--
Magna Park George Building	0535	0635	0744	0837	0842	0945	45	1345	1445	1445	1545	1700	--	1838	2146
Magna Park Stop J	0540	0640	--	0832	0847	--	--	--	1450	--	--	--	--	1843	2151
Lutterworth Kingsway	--	--	--	0826	--	--	--	--	1505	--	--	--	--	--	--
Magna Park Eddie Stobart Logistics	0527	0627	0736	--	0834	0937	37	1337	1437	1437	1537	1652	--	1830	2138
Magna Park Vulcan Way	0528	0628	0737	0840	0835	0938	38	1338	1438	1438	1538	1653	--	1831	2139
Magna Park Disney	0531	0631	0740	--	0838	0941	41	1341	1441	1441	1541	1656	--	1834	2142
Lutterworth George Street Car Park	0550	0650	0755	--	0855	0955	55	1355	1510	1455	1555	1710	--	1855	2200

Saturday - Hinckley The Crescent Bus Station

	8	8	8	8	8	8	8	8	8	8	8	8	8	8	8	8
Lutterworth George Street Car Park	--	0605	0700	0800	0900	1000	1100	1200	1300	1400	1500	1600	1700	1805	2205	
Magna Park Stop J	--	0611	--	--	--	--	--	--	--	--	--	--	--	1811	2211	
Magna Park George Building	--	0616	0706	0806	0906	1006	1106	1206	1306	1406	1506	1606	1706	1816	2216	
Magna Park Disney	--	0620	0710	0810	0910	1010	1110	1210	1310	1410	1510	1610	1710	1820	2220	
Magna Park Eddie Stobart Logistics	--	0625	0715	0815	0915	1015	1115	1215	1315	1415	1515	1615	1715	1825	2225	
Uilesthorpe South Avenue	--	--	0721	0821	0921	1021	1121	1221	1321	1421	1521	1621	1721	--	--	
Claybrooke Magna Bell Street	--	--	0725	0825	0925	1025	1125	1225	1325	1425	1525	1625	1725	--	--	
Burbage Hinckley Park	0510	0636	0736	0836	0936	1036	1136	1236	1336	1436	1536	1636	1736	1836	2236	
Burbage Horsepool	0519	0644	0745	0845	0945	1045	1145	1245	1345	1445	1545	1645	1745	1844	2244	
Hinckley The Crescent Bus Station	0535	0655	0755	0855	0955	1055	1155	1255	1355	1455	1555	1655	1755	1855	2255	

	8	8	8	8		8	8	8	8
Hinckley The Crescent Bus Station	0510	0610	0700	0800		00	1600	1700	2100
Burbage Aston Lane	0518	0618	0709	0809		09	1609	1709	2118
Burbage Hinckley Park	0527	0627	0719	0819		19	1619	1719	2127
Claybrooke Magna Bell Street	--	--	0726	0826	Then at these mins	26	1626	1726	--
Ullesthorpe South Avenue	--	--	0730	0830		30	1630	1730	--
Magna Park Eddie Stobart Logistics	0536	0637	0736	0836		36	1636	1736	2136
Magna Park Disney	0539	0640	0739	0839		39	1639	1739	2139
Magna Park George Building	0543	0644	0743	0843		43	1643	1743	2143
Magna Park Stop J	0548	--	--	--		--	--	1748	2148
Lutterworth George Street Car Park	0555	0655	0755	0855		55	1655	1755	2155

	8	8	8
Lutterworth George Street Car Park	0605	1405	2205
Magna Park Stop J	0611	1411	2211
Magna Park George Building	0616	1416	2216
Magna Park Disney	0620	1420	2220
Magna Park Eddie Stobart Logistics	0625	1425	2225
Burbage Hinckley Park	0636	1436	2236
Burbage Horsepool	0644	1444	2244
Hinckley The Crescent Bus Station	0655	1455	2255

Sunday - Lutterworth George Street Car Park

	8	8	8
Hinckley The Crescent Bus Station	0505	1305	2105
Burbage Aston Lane	0513	1313	2113
Burbage Hinckley Park	0522	1322	2122
Magna Park Eddie Stobart Logistics	0531	1331	2131
Magna Park Disney	0534	1334	2134
Magna Park George Building	0538	1338	2138
Magna Park Stop J	0543	1343	2143
Lutterworth George Street Car Park	0550	1350	2150

Bus Route Map – Hinckley Park



Earl Shilton

Narborough

Hinckley Railway Station

Hinckley Park

Broughton Astley

M1

Nuneaton

M69 Junction 1

M69

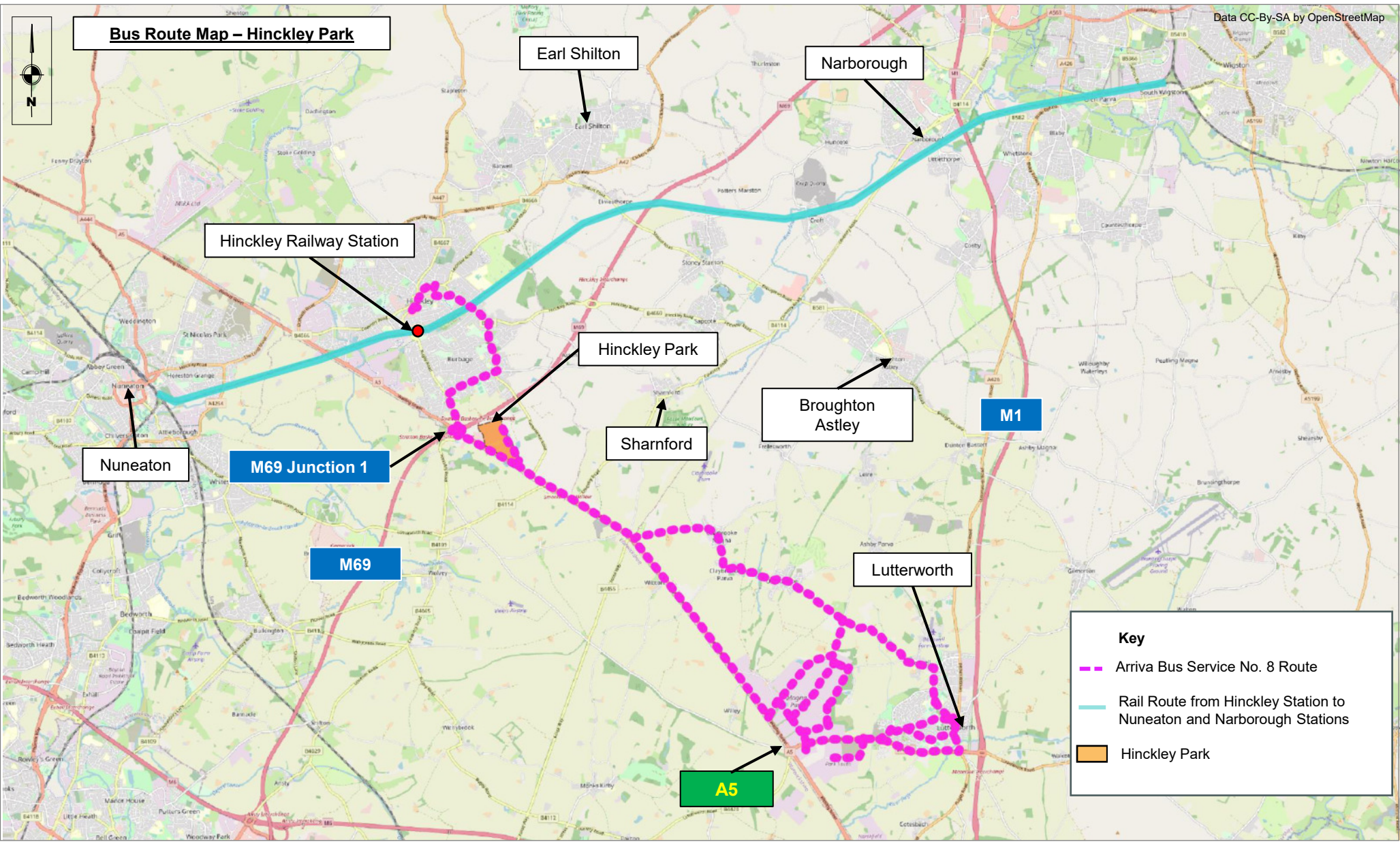
Sharnford

Lutterworth

A5

Key

- Arriva Bus Service No. 8 Route
- Rail Route from Hinckley Station to Nuneaton and Narborough Stations
- Hinckley Park



PUBLIC TRANSPORT - TRAIN

Trains provide a fast, reliable and comfortable alternative to car travel. You can buy a single or day return at the station ticket office, from a ticket machine on the platform or book in advance online via the www.choosehowyoumove.co.uk website. For regular travellers, season tickets are available on a weekly, monthly or annual basis.

The nearest rail station is Hinckley Railway Station, approximately 3.4km to the north west of Hinckley Park. The station is on the Birmingham to Peterborough route and is operated by Cross Country providing services to Nuneaton and Narborough.

Cross Country Trains run services between Birmingham New Street and Leicester, via Hinckley, Narborough and South Wigston, and between Birmingham New Street and Stansted Airport, via Leicester and Melton Mowbray.



Visit National Rail Enquiries to plan your train journey, look up fares, live departures, arrivals and station information.

You can find Route Maps and Live Departure information on the CrossCountry website by using the following links:



www.choosehowyoumove.co.uk

www.crosscountry.co.uk

www.nationalrail.co.uk



CAR SHARING

Car Sharing is the most sustainable way to make journeys by car. By sharing your journey with just one other person you can reduce your travel costs by 50%. You can share cars and take it in turns to drive!

The use of car sharing will be subject to the Government Guidelines surrounding COVID-19



Why Car Share?

- It reduces the number of cars on the roads, resulting in less congestion, less pollution and fewer parking problems
- It provides a real solution to the transport problems of rural areas
- Opportunity to socialise
- Useful for people with mobility difficulties
- Reduced fuel costs
- Time to relax without driving stress



Did you know that a commuter will typically save over £1,000 a year? Find someone to share your journey with to begin savings money.

ELECTRIC VEHICLES

Electric Vehicles (EVs) are vehicles which use one or more electric motors for propulsion. In regards to environmental sustainability, all plug-in vehicles provide improved fuel economy and either zero or reduced emissions.

EVs offer a number of potential savings compared to conventional vehicles.

EVs can be charged in a variety of places including at home, workplace or at designated EV charging points across the UK.



Useful Apps

Taxicode (Android and iOS)

UBER (Android and iOS)

MPG Calculator (iOS)

Basic MPG Calculator (Android)



Most public transport services in Hinckley operate with low floor, easy access vehicles. This means that they can accommodate wheelchairs and enable easier access for those with walking difficulties.

Dial a Ride provides transport for people of any age who are unable to use public transport due to mobility impairment or disability, whether permanent or temporary. They operate door-to-door using vehicles which are fully accessible and can carry wheelchair users in comfort and safety.

You can find more information and a copy of the application form by calling the number below:

Hinckley and Bosworth Community Transport - 01455 250462

TAXI/UBER



Taxis/Ubbers can form an important part of sustainable journeys. Many Taxis are now hybrids or 'green' vehicles, which help to reduce the impact of car journeys on the environment. Taxis could save you money and help to reduce your carbon footprint! If you need to make a journey, why not share with someone else by utilising the Uber service? Uber provides a ride-hailing service where you are quoted on the cost of the fare for the journey and pay before requesting the ride for convenience. There are a number of private hire taxi operators local to Hinckley, through which taxis can be pre-booked.

Useful Taxi Numbers

A1 Taxis Hinckley
01455 615161

Hinckley Taxis
01455 616666

Station Taxis
01455 614444

Please Note - Other Taxi Companies are available

We've given you the tools to decide how to make your journey, now you can explore where you want to go..

Choose How You Move
www.choosehowyoumove.co.uk

Walk4life
www.walk4life.info

Stage Coach
www.stagecoachbus.com

Cycle Streets
www.cyclestreets.net

Sustrans
www.sustrans.org.uk

Arriva Plan my Journey
www.arriva.co.uk

Google Maps
www.google.co.uk/maps

AA Route Planner
www.theaa.com/routeplanner

Enterprise
www.enterprise.co.uk/en/home

Liftshare
www.liftshare.com/uk

National Rail
www.nationalrail.co.uk

Cross Country
www.crosscountry.co.uk

AMENITIES/INFORMATION

Hinckley Library
0116 305 2500
www.leicestershire.gov.uk/libraries

Bikes and Sports Hinckley
01455 617702
www.bikesandsports.co.uk

Hinckley and District Hospital
01455 4418000
www.leicspart.nhs.uk

Hinckley Leisure Centre
01455 610011
www.placesleisure.org





Hydrock

WELCOME TO HINCKLEY PARK

PARK WIDE TRAVEL PLAN
COORDINATOR

Syed Rahi
Email: hinckleyparkTPC@hydrock.com
Telephone: 0161 8045550



HINCKLEY PARK

J 1 • M 6 9

